

2. समृद्ध AGRA

2.4 PFR PROJECT- 6: REDEVELOPMENT OF NEW BUS TERMINAL FOR STATE & INTERSTATE WITH COMMERCIAL SPACE

2.4.1. Objective

The following are primary objectives of the project:

- Development of Bus Terminal as an Integrated Multimodal Transport Hub with buses and IPT modes.
- Engage Public-Private Participation in development of the modern infrastructure including capital investment and explore revenue generation.
- Defined & planned Entrance points
- Defined bus movement and circulation
- Facilitate barrier free passenger areas
- Bus terminal equipped with bus operation and administration areas
- Well-designed passenger waiting areas within the terminal
- Universally accessible and well-designed passenger amenities
- Clear & Visible signage for smooth movement
- Ensure adequate Safety and Security measures
- Use of appropriate finishes for best aesthetics with minimised costs
- To ensure that all the circulation points are disabled friendly

With the city's development, public transport becomes an increasingly important factor accelerating the spatial expansion of cities. Transport Terminals further facilitate the economic well-being of the town by having local businesses concentrated around them, and the facilities which these hubs provide i.e. parking, passenger amenities, administrative and maintenance activities.

The primary objective of redevelopment of Bus Terminal project is to achieve an organized decongestion by building strong institutions and enforcement yet achieve social inclusiveness through provision of sustainable infrastructure.

The proposed redevelopment envisages improving passenger amenities, easy access to terminal, integrated public transport hub, waiting area and other amenities for passengers, development of administrative, maintenance, parking and other related services.

2.4.2. Redevelopment of Interstate Bus Terminal at Agar, Transport Nagar

Public transport plays a crucial role in the commuter transportation in any city. It offers economies of scale with minimized road congestion and low per capita road usage. Cheaper and affordable public transport systems world over have proved to promote mobility – move people more efficiently and safely with increased opportunities for education, employment, social development etc.

City Bus Services (Govt.)	
1	City Bus Services (Govt.)
2	Bijlighar to Kheragarh
3	Bijlighar to Pinahat
4	Bijlighar to Tundla
5	Dayalbagh to Agra Cantt.
6	Dayalbagh to Sainya Rohta
7	Idigah to Fatehpursikri
City Bus Services (Pvt.)	
1	Dayalbagh- Kamla Nagar- Bijlighar-Collectorate- Dayalbagh
2	Dayalbagh-Bhagwan talkies- Agra Cantt.-Bijlighar- Dayalbagh
3	Ajit Nagar Gate-Sikandara-Bhagwan Talkies- Ajit Nagar Gate
4	Ajit Nagar Gate-Mall Road-Bhagwan Talkies-Jaipur House- Ajit Nagar Gate
5	Agra Cantt.-Agra Fort-Water Works-Raja Ki Mandi Rly Stn- Agra Cantt.
6	Agra Cantt.-Jaipur House-Bhagwan Talkies-Sadar Bazar-Agra Cantt.
7	Kamla Nagar-Bhagwan Talkies-Hari Parvat-Trans Yamuna Colony-Kamla Nagar
8	Kamla Nagar-Trans Yamuna Colony-Bijlighar-Diwani Chowk-Kamla Nagar
9	Shahid Nagar-Bijlighar-GhatiyaAzam Khan Choraha-Bhagwan TalkiesDayalbagh
10	Shahid Nagar-Bijlighar-Daulah -Trans Yamuna Colony-Chhalesar
11	Nandlalpur-Trans Yamuna Colony-Bhagwan Talkies-Raja Ki Mandi-Runkuta

12	Shahid Nagar-Sadar Bazar-Bhagwan Talkies-Trans Yamuna Colony-Bijlighar
13	Bijlighar-Collectorate-Bhagwan Talkies-Sikandara-Runkuta
14	Bijlighar-Collectorate-LohaMandi-Bodla-Bichpuri-Nandlalpur
15	Dayalbagh-Sai Ki Takiya-Ilgah Bus Stand-Agra Cantt.-Rawatpur Palace

The major bus terminals in the City include ISBT Near Transport Nagar, Idgah Bus Terminal, Bijlighar and Water Works. The registered vehicles in Agra have increased significantly over the years. This high density and rapid growth of vehicles have worsened the transport situation to a significant extent. The phenomenal increase of cars - demand more road space and has resulted in dense concentration of traffic on roads.

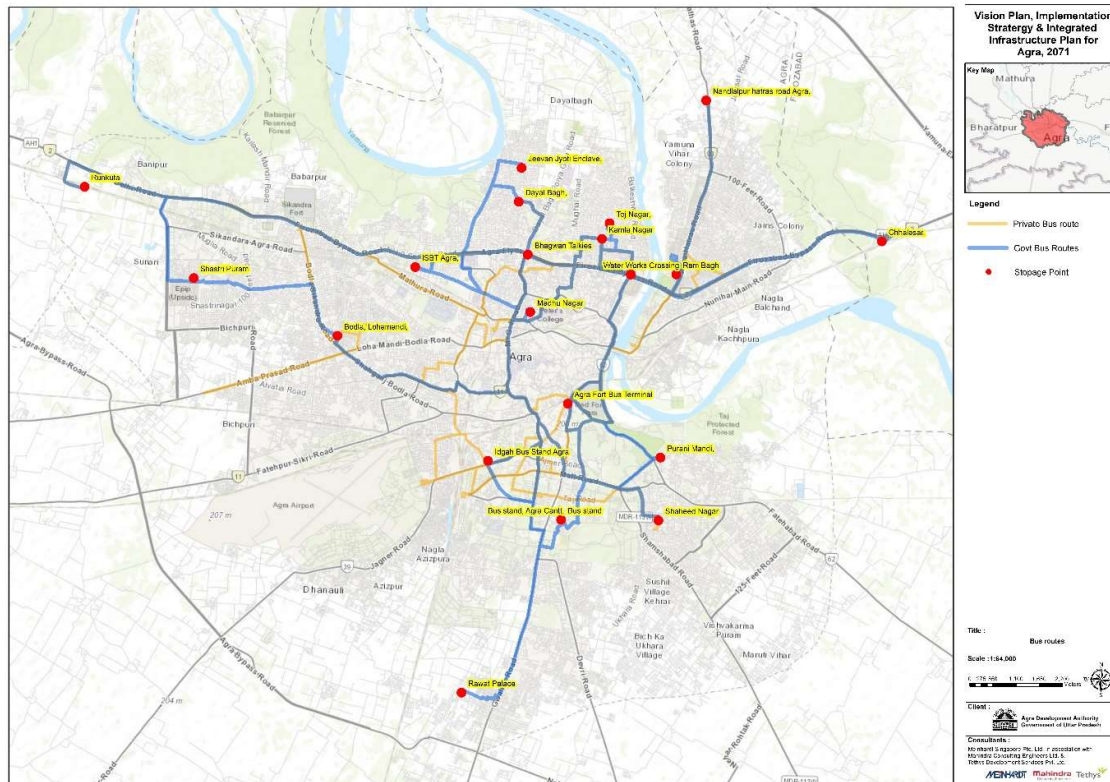


Figure 2-1 Agra bus routes

At present the public transport services are rather limited and bus is the only mass transport system in the Agra. Agra Mathura City Transport Services Limited (AMCTSL) operates the city bus services consisting of mainly normal buses and few low floor buses & mini buses. The fleet size of about 170 buses is a noticeable feature of poor supply public transport. The present supply of buses per lakh populations works out to only nine buses, which cannot be compared with any standards.

The route structure in Agra has been designed by Agra Mathura City Transport Services Limited based on major boarding/alighting demand locations.

The benchmark for assessing the supply of buses should be about 60 to 70 buses per lakh population for city like size of Agra. Private auto, shared auto, cycle rickshaw and e-rickshaws supplement these transportation

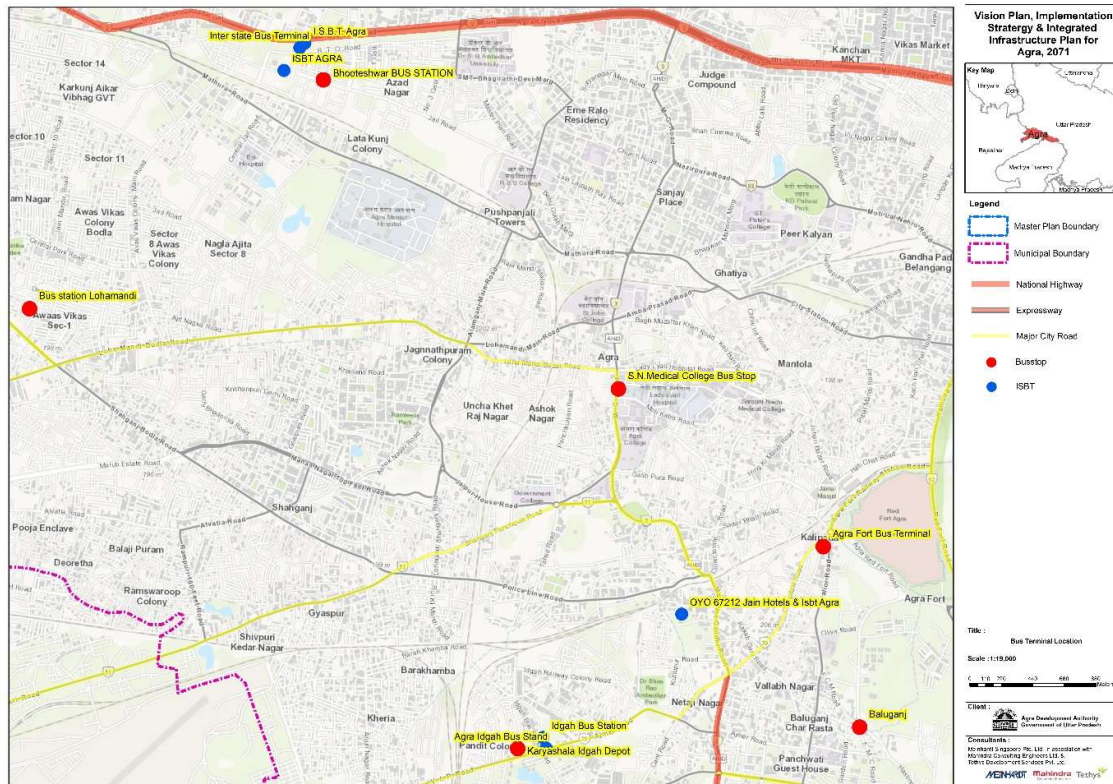


Figure 2-2 Bus terminals in Agra

2.4.3. Improvements areas for Bus Terminal area

The following key improvement areas:

- Improvement in circulation and traffic, parking spaces
- Uplift of bus parking, bus bay, admin building, stores, maintenance facilities
- Provision of basic passenger amenities
- Explore revenue generation potential through provision of commercial spaces

Hence Bus Stand improvement becomes essential for improving the living condition and the built environment, to provide better infrastructure, pleasant visual image along with the existing essence of the shopping culture and the context of the area.

2.4.4. Market Analysis for Inter- State Bus Terminal

Particulars	Interstate Bus Terminal		
Location	Trichy city, Tamil Nadu	Baramunda, Bhubaneswar	Bairiya Chak village, Patna-Gaya Road
Completed	2022	2022	2023
Estimated Cost	159 Cr	180 Cr	300 Cr
Area allocated	48 acres	15.5 acres	25 acres
Land-use Development		Mixed Land-use	
Current Daily Buses in Operation (interstate & intercity bus)		800 buses/day	
Proposed Daily Commuters	1.0 lakhs riders		1.5 lakhs riders
Proposed Daily Buses	2245 buses/day	2000 Buses/day	3000 Buses/day
Bus Parking Capacity		300 Buses	190 Buses

Particulars		Interstate Bus Terminal	
Facilities at Bus Terminal	commercial complex, two-wheeler and four-wheeler parking, police station, fire service station and post office	commercial office space, retail space, multi-level car parking and open public space, passenger pick-up and drop-off, pre-paid auto rickshaws, taxis, cycle rickshaws	High-speed Wi-Fi, multi-level car parking, waiting lounges, pick-up and drop zones for private, pre-paid private vehicle
Mode of Development		PPP	



2.4.5. Financial Analysis

- Construction Cost: 180 to 200 Cr
- Mode of Development: PPP Mode
- Construction Duration: 4-5 Years

2.4.6. List of Stakeholders

- ADA,
- AMC,
- UPSRTC

